

EWING FOUNDATION

for deaf children

Annual Report

2018 – 2019

Welcome

Over the past year, the Ewing Foundation's team of Education Consultants and Specialist Audiology Technicians have been in great demand. We have been called in to support staff and share best practice in new schools and services, and welcomed back by those with whom we have already worked for many years. The Trustees and I extend grateful thanks to everyone on the team.

Our small family of charities has continued to thrive:

The grant-making charity Ovingdean Hall Foundation has supported a number of education projects for deaf children. The Foundation also funds The Con Powell Memorial Scholarships, the much-needed bursary programme for teachers training to qualify as Teachers of the Deaf (QToDs).

Burwood Park Foundation has offered expert support to professionals who work with deaf children with additional special needs.

And Ewing Foundation has welcomed a new Chief Executive Officer, Sarah Armstrong, who has been overseeing our daily work and beginning to make plans for the future. Planning is key because the need for the services of the Ewing Foundation is growing. The Consortium for Research into Deaf Education (CRIDE) have reported that QToD numbers have been in steady decline in recent years; currently, there are just over 1,000 QToDs to support an estimated population of 45,000 deaf children and young people in England (CRIDE Report, 2018).

We exist to equip professionals with the strategies and technical support they need to ensure that deaf children have the right learning environment. We are grateful that, thanks to the generosity of The Robert McAlpine Foundation, we can offer our services at a heavily subsidised rate. But as we move into the future, we must look to new friends and sources of support so that we can continue this vital work.

It has been almost 70 years since my late parents, Malcolm and Sheila, established the Foundation, naming it after Sir Alexander and Lady Irene Ewing, the audiologists who were so helpful to them when my brother Adrian was born profoundly deaf. The Trustees and I remain committed to ensuring that deaf children get the very most from their time at school.

Hamish McAlpine
Chair



Chair Hamish pictured with new Chief Executive Officer Sarah Armstrong



Children taking part in a Panathlon event supported by Ovingdean Hall Foundation



Specialist Audiology Technician Paul Harris demonstrating radio aids at a training event

EWING FOUNDATION
for deaf children



Ewing Foundation

During 2018-19, our team of Education Consultants and Specialist Audiology Technicians worked with over 90 authorities, services and schools.

Our mission is to provide the optimum teaching and learning environment for professionals and the deaf students they support. We achieve this by ensuring that classroom and personal hearing technology is working correctly, and that deaf students can communicate effectively with teachers, support workers and other pupils. We also help professionals develop their expertise by providing a variety of courses, networking opportunities and online resources at www.ewing-foundation.org.uk

Welcome

During summer 2018, Sarah Armstrong became our new Chief Executive Officer. Before joining us, Sarah was a senior manager for a national charity leading in volunteering policy and practice, a regional lead for a charity raising aspirations for young people with a disability, and, in her previous role, was the Chief Executive of York CVS, an ambitious social action organisation.

'There has been a common strand to all my work, providing a voice for people who are not always heard,' Sarah said. 'Whether that's children in the care system, young people with a disability or parents who are overwhelmed, my role has been to make sure they have the support they need to thrive.'



Chief Executive Officer Sarah Armstrong

'With the number of deaf children in England rising, and the numbers of Qualified Teachers of the Deaf (QToDs) decreasing, this presents multiple challenges. I am ready to play an active role, working with the Ewing team of consultants and technicians, in meeting those challenges.'

Supporting scholars

We have continued to mentor those who have been awarded **The Con Powell Memorial Scholarships** for teachers training to become QToDs. The bursaries, which are managed by The British Association of Teachers of the Deaf (BATOD), are named for our first Chief Executive and BATOD's first President, the late Con Powell.



Supporting professionals

In July 2018, we dedicated a training day to **Linking Listening to Language**. The event, which included understanding and assessing listening skills and effective use of speech discrimination tests, explored the link between listening and language assessment.

In November 2018, our popular networking group **GLADE (Greater London Affiliation for Deaf Education)** held its fifth annual conference. Entitled *And now for something completely different*,

the conference featured recent research, practical tracking systems, and new programmes and apps to support numeracy and literacy development. *'The support GLADE has given me over the years has been so very valuable,'* said one member. *'It has helped to shape my knowledge and benefitted the numerous children I have worked with over the years.'*

In January 2019, we provided technical support to trainee Teachers of the Deaf on **The University of Birmingham's Postgraduate Diploma in Education (Special Education – Hearing Impairment)**. Our team delivered workshops on using a hearing aid analyser to test hearing aids and set up radio aids.



A presentation at GLADE 2018

In February 2019, we delivered a presentation on **Understanding radio aids and cochlear implants** at an event run by **The Midlands Hearing Implant Programme** in Birmingham. Our hands-on workshop focused on setting up radio aid systems with cochlear implant processors.

Thank you . . .

To Graham Hamilton and Stevie Mayhook who left the Ewing Foundation during summer 2018 after many years of service. In their respective roles as Specialist Audiology Technician and Education Consultant, they have helped hundreds of teachers, technicians and students in their work with deaf children.

'Ewing Foundation is a very small organisation so individual team members like Graham and Stevie have an incredible impact on our work,' said Chair Hamish McAlpine. *'We have benefitted enormously by having their great expertise and commitment on our team. Thank you to both Graham and Stevie for everything they have done for Ewing, for professionals in the field and for deaf children around the country.'*



Stevie



Graham

Ovingdean Hall Foundation

Over the year, Ovingdean Hall Foundation (OHF), funded a number of projects for deaf children and young people.

We are supported in our work by a loyal community of donors, all of whom have been with us since our time as Ovingdean Hall School. We write to our friends twice a year, enclosing a newsletter and an appeal letter, and they can opt-out at any time. During 2018-19, we embraced the new data protection regulations and are pleased to report that we did not receive any complaints.

The Trustees are grateful to Grants Advisor Jonathan Coe who meets with our applicants, and monitors the progress of projects once grants are made. To find out more about our work, please visit us: www.ovingdeanhall.org

The Con Powell Memorial Scholarships at The British Association of Teachers of the Deaf (BATOD)

Five teachers won our scholarships to train to become Qualified Teachers of the Deaf (QToDs). Managed by BATOD, the scholarships are aimed at teachers who are not eligible to access funds through the usual local authority channels.



The Ear Foundation

We supported The Ear Foundation's 2018 Outdoor Activities Challenge in Derbyshire. The residential focused on developing skills, friendships and effective use of hearing technology. Ofsted judged the Challenge to be outstanding.

One young person said: *'I felt more independent and free – it helps me focus more on my responsibilities.'* We also supported their leadership course for deaf young people aged 18-25 years, with participants going on to help lead the Outdoor Activities Challenge.



The Elizabeth Foundation

We were delighted to work with The Elizabeth Foundation again, contributing towards their *Let's Listen and Talk* programme for deaf children from 0-5 years. The online interactive programme helps parents support their child in developing listening, speaking and communication skills, and is designed to reach families who live far away from the charity's Hampshire headquarters.



'This is such a valuable resource for our whole family,' said one parent.

Linden Lodge School

This year, Linden Lodge School in Wandsworth opened The Isobel Centre, their new facility for children with multi-sensory impairments and their families. We funded a multi-purpose room in memory of Lawrence Baker, a supporter who left us a legacy in his will. *'Families can come here to meet each other, see professionals, and join in sessions and playgroups. It is a familiar, comfortable space which creates confidence, and has exceeded all expectations,'* said Head Teacher Debbie Rix.



The OHF-funded room in
The Isobel Centre

Mousetrap Theatre Projects

We supported four theatre events for deaf children which were organised by Mousetrap. Two events were built around the musical *School of Rock* with 60 children taking part. A further 157 attended performances of *Romeo and Juliet* at The Globe. Each event included a pre-show drama workshop exploring the story, an onstage tour and a matinee performance which was either British Sign Language interpreted or captioned.

'Everything was broken down and pitched at the right level, and motivated every child to get involved,' said one teacher.

Children take part in a
School of Rock drama workshop



Music and The Deaf

We enabled Music and The Deaf to deliver musical inspiration days to 114 children and their teachers in the West Midlands, Devon and Rotherham. Following the days, 80% of the children said they were keen to continue playing music, with a number going on to take lessons. *'The children have been really inspired by the music,'* said a member of the Rotherham Hearing Support Team.



Danny Lane (far right) delivering a musical inspiration day



National Sensory Impairment Partnership (NatSIP)

We continue to support an important seven-year study into the performance of deaf children at school. The data collection, analysis and reporting is being carried out by NatSIP in partnership with the Consortium for Research into Deaf Education (CRIDE), University College London and City, University of London. The purpose of the longitudinal study is to identify any relationship between results that individual deaf pupils achieve and the support they receive in school. Pupil outcomes will be tracked across their school years. The ultimate aim is to improve education outcomes for deaf children.



Panathlon

We supported sports charity Panathlon's swimming and boccia tournaments for deaf children and young people. The events, which focus on building strength, leadership skills and social confidence, have been described as, *'a fabulous experience for deaf children who can often feel isolated.'*

Children celebrate taking part in a Panathlon tournament



Polka Theatre

With our support, Polka adapted four shows for deaf children. *'The Stage Text captioning was popular not only with children who don't sign so well yet,'* said Helen Hughes, Fundraising Manager, *'but also with adults, notably grandparents, who may also have hearing impairments.'*

POLKA
Where theatre begins...

Polka's advert for *Wind in the Willows*, one of the shows which was adapted for deaf children



Photo © Michael Wharrey & Rebecca Pitt

SignHealth

We have helped to fund an Independent Domestic Violence Advisor who has worked with D/deaf women and girls in Sussex who have experienced or witnessed abuse. *'We have worked with D/deaf victims of abuse in crisis and through outreach work, helping them to cope in difficult and often life-threatening circumstances,'* says Rebecca from SignHealth.

**THE DEAF HEALTH
CHARITY
SIGNHEALTH**

University of Manchester

We are encouraging the next generation of professionals working with deaf children by funding a number of research grants for students on The University of Manchester's MSc in Audiology and Deaf Education programmes. Student Emily McCabe used her funding to investigate hearing test methods for children with Autistic Spectrum Disorder. She said: *'Your grant has enabled me to visit clinics and research facilities, and collaborate with NHS sites for data collection.'*

MANCHESTER
1824

The University of Manchester

During the year, our three-year partnership with **Auditory Verbal UK (AVUK)** came to a close. Here, they reflect on our work together:

AVUK is an award-winning charity working to create a sound future for deaf children. Through innovative Auditory Verbal Therapy (AVT), parents are equipped with the skills to teach their children to listen and speak through play and everyday routines. Four out of every five children who spend at least two years on the programme at AVUK achieve spoken language appropriate for their age.

AVUK also provides training to Teachers of the Deaf (ToDs), audiologists and speech and language therapists in Auditory Verbal practice. OHF has made it possible for many professionals to undertake this training by offering bursaries.

These include Rosie Gardner, who is based in Northern Ireland, and who has been working as a ToD for over 30 years. OHF enabled Rosie to take one of the most important steps of her career and train to become an Auditory Verbal Therapist.

Rosie attended a one-day course on AVT, which had left a big impression on her. As time went by, she encountered more and more families who emphasised how transformational this approach to developing listening and spoken language had been for them. As Rosie explained: *'Over the years that I have taught deaf children, the advances in hearing technology, the earlier diagnosis through the new-born hearing screening and the extensive research on the brain means that AVT makes complete sense to me.'*

She was first in line to apply for a bursary when the opportunity was available. The training has had a great impact on Rosie's practice. She said:

'It has massively affected and completely changed my thinking about what I do and how I do it as I try to improve my professional performance. The ideal is that I actively listen to and coach parents so that we, collaboratively, journey together to work towards the outcomes we all aim for: a happy and fulfilled child who listens and talks.'

After completing her training, Rosie qualified as a Listening and Spoken Language (LSL) certified Auditory Verbal Therapist: *'It is a fabulous training, carefully balanced between theory and practice,'* she said. *'I am very grateful for the opportunity provided by OHF.'*

Thanks to OHF, 35 bursaries have now been received by professionals working with deaf children.

Rosie (far left) supports a child through Auditory Verbal Therapy



Burwood Park Foundation

Burwood Park Foundation is a small, specialist organisation focused on supporting deaf children with additional needs. Burwood Park Consultant Joyce Sewell-Rutter, who is managed by the Ewing Foundation, works with professionals across a range of contexts.

In her role as mentor and trainer she has travelled nationally sharing knowledge of technology and practical strategies to enhance learning and living.

The focus on deafness and autism is growing amongst professionals, and Joyce's training events have helped to reach wider audiences with information. She facilitates BATOD's Special Interest Group (SIG) in deafness and autism, and the theme of her event in April 2018 was *Closer Collaboration with Practical Strategies*. Parents attended for the first time which proved a positive initiative for everyone. One delegate said: 'Very good day, lovely mix of parental and professional input.'

www.ewing-foundation.org.uk/sister-charities/burwood-park-foundation/



Joyce presenting at the Deafness and Autism Special Interest Group

Working with others

In addition to our many clients, we have also worked with:

British Association of Teachers of the Deaf (BATOD)

Ewing Foundation Consultants and Technicians contributed to the work of BATOD by submitting articles in the professional journal, exhibiting at conferences and delivering training sessions.

Education Consultant Trish Cope is secretary of BATOD North and, along with the other members of the committee, plans and organises the annual study day.

Burwood Park Foundation's Education Consultant Joyce Sewell-Rutter also facilitates their special interest group into deafness and autism.

Stephanie Dawson, from the Hearing Support Team at Birmingham City Council, presents at the Deafness and Autism Special Interest Group



Mary Hare and the University of Hertfordshire

Ewing Foundation has collaborated with Mary Hare on a number of courses. These include the MA/PGDip in Educational Studies (Hearing Impairment) which is run by Mary Hare in association with the University of Hertfordshire.

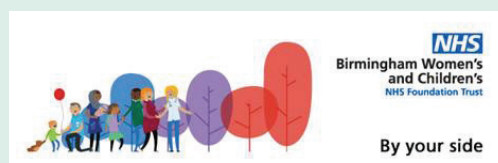


Ewing Foundation and Mary Hare's BTEC Advanced Award for Audiology Technicians ran again during 2018.



The Midlands Hearing Implant Programme (MHIP)

Ewing Foundation staff participated in an event organised by the MHIP, part of the Birmingham Women's and Children's NHS Trust. Their **Understanding radio aids and cochlear implants** training brought delegates together to learn about the latest hearing technology.



UK Children's Radio Aid Working Group

Ewing Foundation is a founding member of the Working Group, a forum for professionals working with deaf children. The group aims to influence the quality and consistency of FM provision and practice. Jeremy Hine and Joyce Sewell-Rutter are current members.

University of Birmingham



Stevie Mayhook, as Regional Tutor for the Greater London area, supported students on The University of Birmingham's Teachers of Children with Hearing Impairment MEd/ BPhil/ Postgraduate Diploma. Ewing Foundation staff have undertaken teaching placement supervision for this course, running the audiology workshops during the residential week.

University of Manchester

Ewing Foundation staff have undertaken teaching placement supervisions for The University of Manchester's Deaf Education MSc/ PGDip. Trish Cope works at Manchester, lecturing in language development and assessment to trainee Teachers of the Deaf.



Ewing Foundation

Charity Details as at 31 March 2019

Statement of Financial Activities

	Unrestricted Funds	Restricted Funds	Total 2019	Total 2018
INCOMING RESOURCES				
Incoming Resources from generated funds:				
Donations and Legacies	285,000	–	285,000	285,141
Investments	143,614	–	143,614	181,067
Incoming Resources from charitable activities	95,693	–	95,693	81,763
Activities for generating funds	1,912	–	1,912	–
Total Incoming Resources	526,219	–	526,219	547,971
RESOURCES EXPENDED				
Costs of generating funds:				
Costs of generating voluntary income (investment management costs)	[7,284]	–	[7,284]	[7,854]
Charitable activities	[541,615]	–	[541,615]	[578,256]
Total Resources Expended	[548,899]	–	[548,899]	[586,110]
Net Incoming (Outgoing) resources for the year	[22,680]	–	[22,680]	[38,139]
Gains (Losses) on Investments	[43,725]	–	[43,725]	[142,865]
Net Movement in Funds	[66,405]	–	[66,405]	[181,004]
Total funds brought forward at 1 April 2018	3,095,025	150,000	3,245,025	3,426,029
Total funds brought forward at 31 March 2019	3,028,260	150,000	3,178,620	3,245,025
Balance Sheet				
Fixed Assets				
Tangible Assets	57,425	–	57,425	45,172
Investments	2,888,703	–	2,888,703	3,096,124
	2,946,128	–	2,946,128	3,141,296
Current Assets				
Debtors	154,776	–	154,776	64,525
Cash at bank and in hand	131,420	–	131,420	92,048
	286,196	–	286,196	156,573
Creditors				
Amounts falling due within one year	[53,704]	–	[53,704]	[52,844]
Net Current Assets	232,492	–	232,492	103,729
Net Assets	3,178,620	–	3,178,620	3,245,025
Accumulated Funds				
Designated Fund	–	150,000	150,000	150,000
General Funds	3,028,620	–	3,028,620	3,095,025
	3,028,620	150,000	3,178,620	3,245,025

Ovingdean Hall Foundation

Charity Details as at 31 March 2019

Statement of Financial Activities

	Unrestricted Funds	Restricted Funds	Total 2019	Total 2018
INCOME AND ENDOWMENTS FROM				
Incoming Resources from generated funds				
Voluntary income (donations and legacies)	10,362	–	10,362	9,906
Investments	69,898	–	69,898	101,051
Total Incoming Resources	80,260	–	80,260	110,957
RESOURCES EXPENDED				
Costs of generating funds				
Costs of generating voluntary income	4,559	–	4,559	4,700
Charitable activities	146,299	–	146,299	205,027
Total Resources Expended	150,858	–	150,858	209,727
Net Incoming (Outgoing) Resources for the year	[70,598]	–	[70,598]	[98,770]
Gains (Losses) on Investments	138,242	–	138,242	[104,706]
Net Movement in Funds	67,644	–	67,644	[203,470]
Fund balances at 1 April 2018	1,840,805	–	1,840,805	2,044,281
Fund balances at 31 March 2019	1,908,449	–	1,908,449	1,840,805

Balance Sheet

Fixed assets				
Tangible Assets	–	–	–	–
Investments	1,675,751	–	1,675,751	1,720,143
	<u>1,675,751</u>	<u>–</u>	<u>1,675,751</u>	<u>1,720,143</u>
Current Assets				
Debtors	171,058	–	171,058	99,246
Cash at bank and in hand	80,619	–	80,619	26,658
	<u>251,677</u>	<u>–</u>	<u>251,677</u>	<u>125,904</u>
Creditors				
Amounts falling due within one year	[18,979]	–	[18,979]	[5,242]
Net Current Assets	232,698	–	232,698	120,662
Net Assets	1,908,449	–	1,908,449	1,840,805
Accumulated Funds				
Designated Fund	–	–	–	–
Unrestricted Fund	1,908,449	–	1,908,449	1,840,805
	<u>1,908,449</u>	<u>–</u>	<u>1,908,449</u>	<u>1,840,805</u>

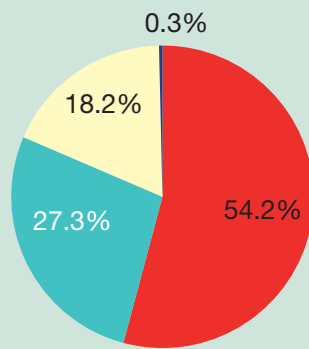
Burwood Park Foundation

Charity Details as at 31 March 2019

Statement of Financial Activities

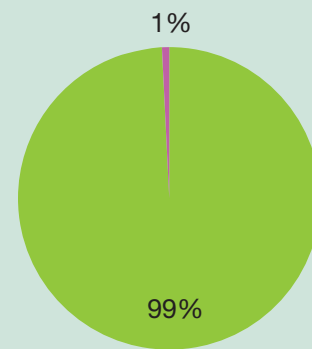
	Unrestricted Funds	Restricted Funds	Total 2019	Total 2018
INCOME AND ENDOWMENTS FROM				
Incoming Resources from generated funds				
Charitable activities	–	–	–	–
Activities for generating funds	–	–	–	–
Investments and Interest	21,316	–	21,316	47,545
Total Incoming Resources	21,316	–	21,316	47,545
RESOURCES EXPENDED				
Costs of generating funds				
Charitable activities	[255,063]	–	[255,063]	[253,613]
Raising funds	[739]	–	[739]	[1,642]
Total Resources Expended	[255,802]	–	[255,802]	[255,255]
Net Incoming (Outgoing) Resources for the year	[234,486]	–	[234,486]	[207,710]
Gains (Losses) on Investments	–	39,759	39,759	[54,648]
Transfers between funds	250,000	[250,000]	–	–
Net movement in funds	15,514	[210,241]	[194,727]	[262,358]
Fund balances carried forward at 1 April 2018	483,254	300,349	783,603	1,045,961
Fund balances carried forward at 31 March 2019	498,768	90,108	588,876	783,603
Balance Sheet				
Fixed assets				
Tangible Assets	–	–	–	–
Investments	517,511	–	517,511	719,000
Current Assets				
Debtors	1,295	–	1,295	11,004
Cash at bank and in hand	72,532	–	72,532	55,931
	73,827	–	73,827	66,935
Creditors				
Amounts falling due within one year	[2,462]	–	[2,462]	[2,332]
Net Current Assets	71,365	–	71,365	64,603
Net Assets	588,876	–	588,876	783,603
Accumulated Funds				
Unrestricted funds	498,768	–	498,768	483,254
Restricted funds	–	90,108	90,108	300,349
	498,768	90,108	588,876	783,603

Ewing Foundation



Incoming Resources

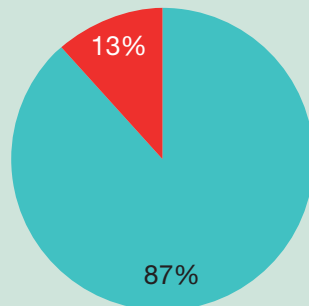
- Donations and Legacies £285,000
- Investments £143,614
- Incoming Resources from Charitable Activities £95,693
- Activities for generating funds £1,192



Resources Expended

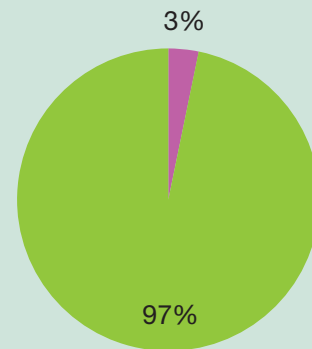
- Charitable activities £541,615
- Investment management £7,284

Ovingdean Hall Foundation



Incoming Resources

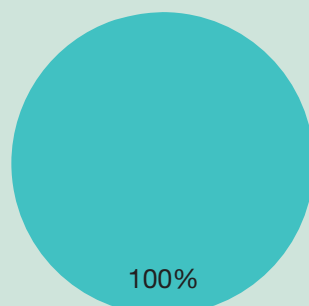
- Investments £69,898
- Voluntary income £10,362



Resources Expended

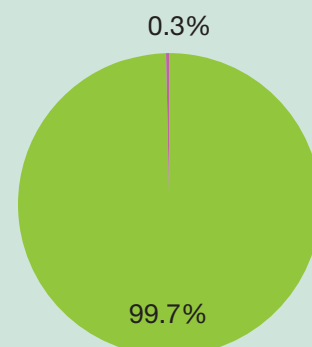
- Generating voluntary income £4,559
- Charitable activities £146,299

Burwood Park Foundation



Incoming Resources

- Investments £21,293



Resources Expended

- Charitable activities £255,063
- Raising funds £793

Trustees and Teams

Ewing Foundation Trustees

Lord Borwick
Mrs Shirley Metherell MBE
Miss Antonia McAlpine
Mr Hamish McAlpine, *Chair*
Mr Edward Moore
Mrs Lindsey Rousseau

Ewing Foundation Team

Chief Executive Officer:
Sarah Armstrong

Education Consultants:
Trish Cope
Stevie Mayhook
Joyce Sewell-Rutter

Clinical Audiologist:
James Mander

Specialist Audiology Technicians:
Graham Hamilton
Paul Harris
Jeremy Hine
Abul Hussain

Burwood Park Foundation Trustees

Mrs Pauline Hughes
Mrs Sue Knowles
Mr Hamish McAlpine, *Chair*
Ms Carole Siller

Burwood Park Foundation Consultants

Joyce Sewell-Rutter
with Lindsey Rousseau, *Independent Advisor*

Ovingdean Hall Foundation Trustees

Mr John Hughes
Mrs Pauline Hughes
Mr Hamish McAlpine, *Chair*
Mr Edward Moore
Mr Ian Johnson
Mrs Lindsey Rousseau

Ovingdean Hall Foundation Team

Claire Simons (also Ewing Foundation)
Jonathan Coe

Thank you . . .

We could not carry on our work without the generous support of The Robert McAlpine Foundation and bequests from the estate of the late Malcolm McAlpine. Thank you.

Grateful thanks are also extended to:

Advanced Bionics, Connevans Ltd, MED-EL UK Ltd, Oticon Medical, Phonak and PC Werth for demonstrating equipment and problem-solving strategies at our BTEC Technicians' courses.



The generous supporters of Ovingdean Hall Foundation



Children celebrate taking part in a Panathlon boccia tournament funded by OHF

Ewing Foundation

15 Great College Street, London SW1P 3RX

Tel: 01273 301 929

Tel/text: 07778 599 939

Email: info@ewing-foundation.org.uk

Website: www.ewing-foundation.org.uk

Registered charity number: 226746